



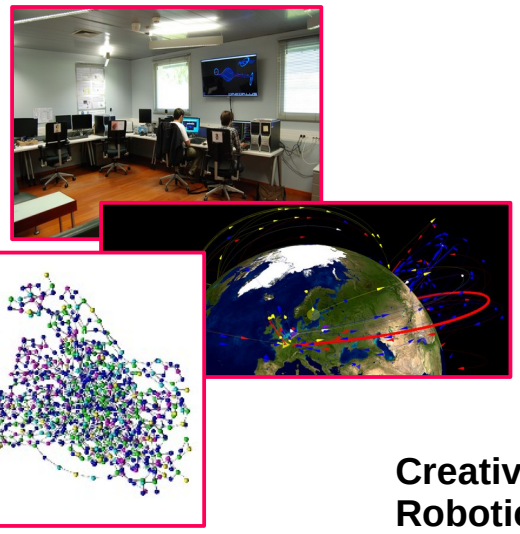
Service d'Expérimentation  
et Développement (SED)

Service Informatique de Soutien à la  
Recherche (SISR)

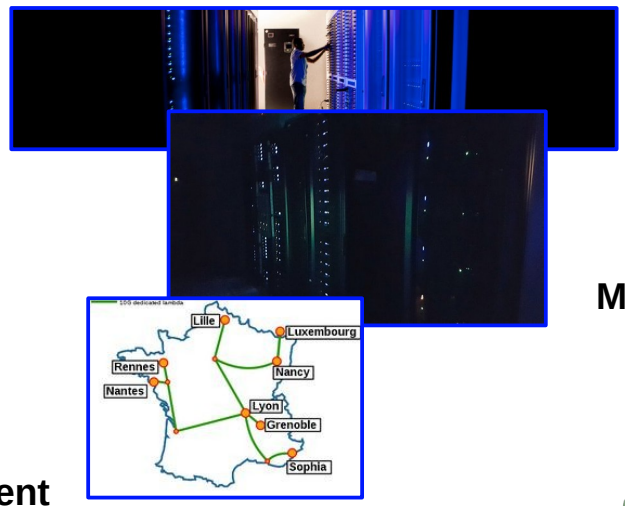
*Inria / Loria*

# Helping by managing scientific platforms..

## High Security Lab



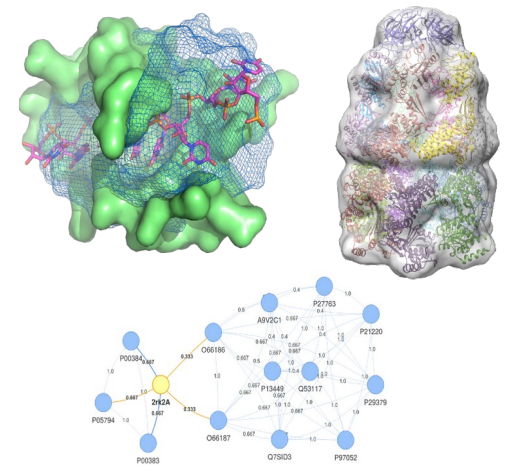
## Grid5000



## Creativ Lab, Robotic, Intelligent Home platform

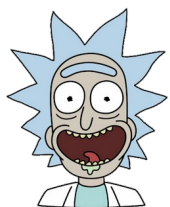


## MBI-DS4H Modelling Biomolecules and their Interactions Data Science for Health

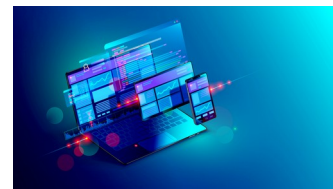
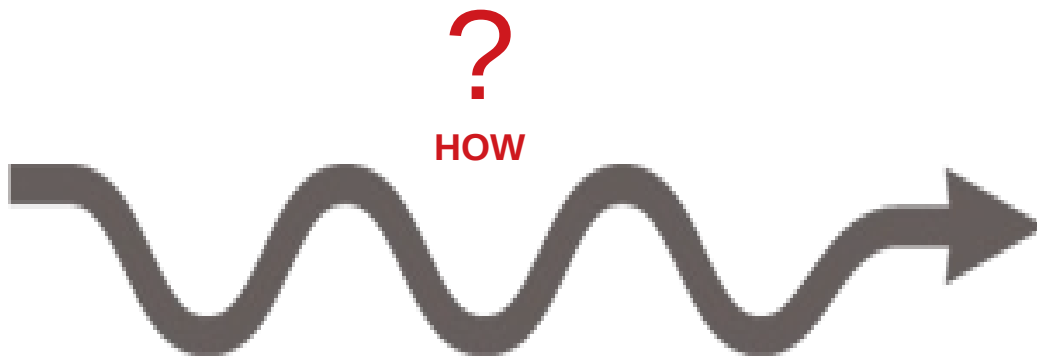




# Helping researchers, students, engineers, internships in software development



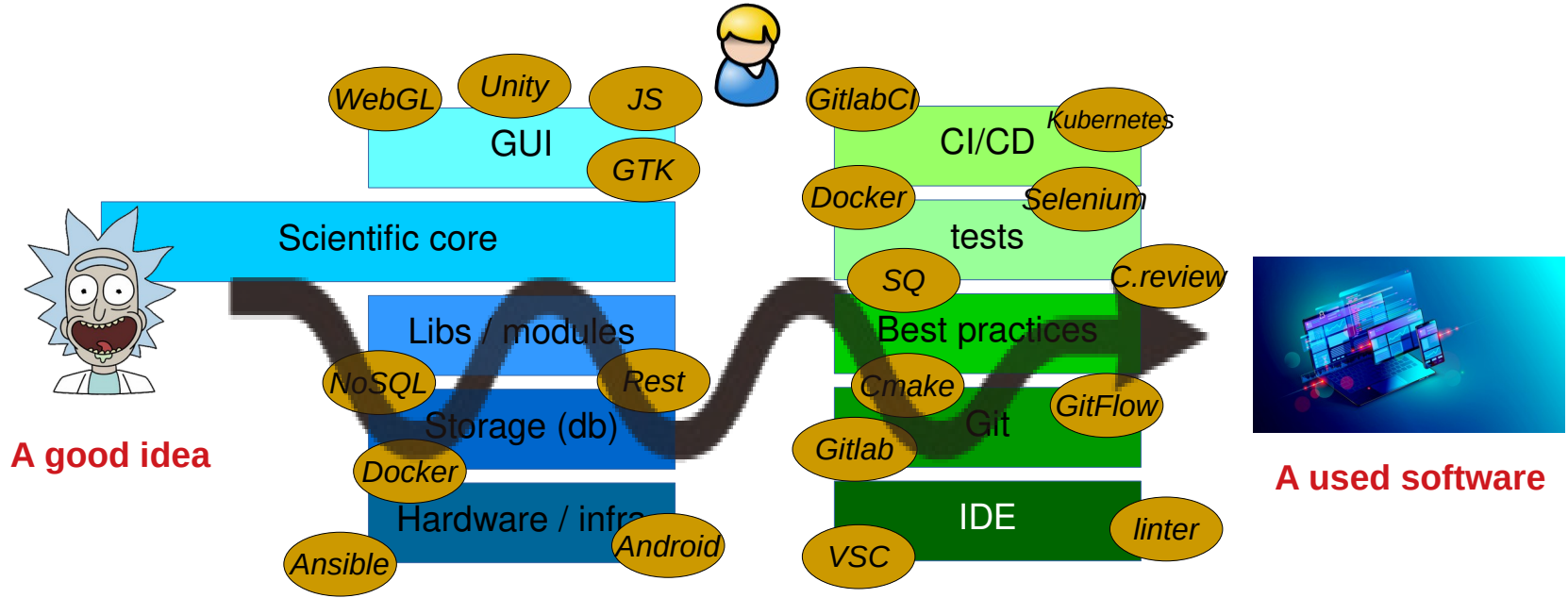
A good idea



A used software



# Helping researchers, students, engineers, internships in software development





# SED Team



**Alain Filbois**

- C/C++
  - Graphic, deep learning
  - Hardware
- work actually on openpause*



**Benjamin Dexheimer**

- Web Full Stack
  - UX
  - Visualisation
- work actually on LHS, isotop*



**Thé Biasutto-Lervat**

- Deep learning
- *work actually on Voice recognition*



**Bertrand Wallrich**

- Web Full-Stack
  - Security
- work actually on SED Manager*



**Benjamin Berard**

- Infrastructure
  - Virtualisation
  - Hardware server
- work actually on G5K*



**Frederic Beck**

- Security
  - Infra, python
- work actually on HSL*



Loria



Inria





# SED Team



**Alain Filbois**

**LARSEN**

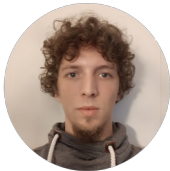
- C/C++
  - Graphic, deep learning
  - Hardware
- work actually on openpause*



**Benjamin Dexheimer**

**GAMBLE**

- Web Full Stack
  - UX
  - Visualisation
- work actually on LHS, isotop*



**Thé Biasutto-Lervat**

**MULTISPEECH**

- Deep learning
- *work actually on Voice recognition*



**Bertrand Wallrich**

**...ALL...**

- Web Full-Stack
  - Security
- work actually on SED Manager*



**Benjamin Berard**

**RESIST**

- Infrastructure
  - Virtualisation
  - Hardware server
- work actually on G5K*



**Frederic Beck**

**RESIST**

- Security
  - Infra, python
- work actually on HSL*



Loria



Inria





# SED Team



**Laurent Pierron**

- C/C++
  - Python
- work actually  
multispeech/Expomobile*



**Stephane Glondu**

- Cryptography
  - Formal proof
- work actually on Belenios*



**Olivier Demengeon**

- C/C++
  - Graphic
  - Deep learning
- work actually on Orphamine*



**Pierre Bedell**

- Web full stack
- Dataverse



**Olivier Rochel**

- Robotic
- work actually on CreativLab -  
Robots*



**Christelle Donnat**

- Assistante





# SED Team



**Laurent Pierron**

- C/C++
  - Python
- work actually multispeech/Expomobile*

**MULTISPEECH**



**Stephane Glondu**

- Cryptography
  - Formal proof
- work actually on Belenios*

**CARAMBA**

**PESTO**

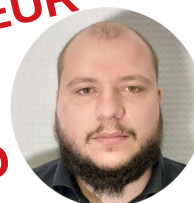


**Olivier Demengeon**

- C/C++
  - Graphic
  - Deep learning
- work actually on Orphamine*

**ORPAILLEUR**

**CAPSID**



**Pierre Bedell**

- Web full stack
- Dataverse

**...ALL...**



**Olivier Rochel**

- Robotic
- work actually on CreativLab - Robots*

**LARSEN**



**Christelle Donnat**

- Assistante



Loria



Inria





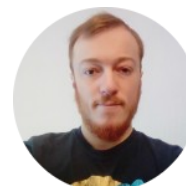
# SISR Team



**Adrien Genard**

- Robotics,
- UAVs

*work actually on Creativ'Lab*



**Nicolas Valle**

- Robotic
- C++

*work actually on Creativ'Lab*



**Fabrice Sabatier**

- Security,
- Virology

*work actually on HSL*



**Patrice Ringot**

- DevOps
- Infra

*Work actually on G5K*



**Jonathan Alcuta**

- Web full stack,
- Infra

*work actually on DS4HRobotic*



**Philippe Noël**

- DevOps,
- Bioinformatics

*Work actually on LOLA*





# SISR Team

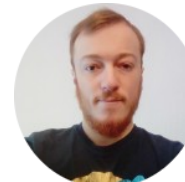


**Adrien Genard**

- Robotics,
- UAVs

**Creativ Lab**

*work actually on Creativ'Lab*



**Nicolas Valle**

- Robotic
- C++

**Creativ Lab**

*work actually on Creativ'Lab*



**Fabrice Sabatier**

- Security,
- Virology

**Carbone**

*work actually on HSL*



**Patrice Ringot**

- DevOps
- Infra

**G5K**

*Work actually on G5K*



**Jonathan Alcuta**

- Web full stack,
- Infra

**MBI-DS4H**

*work actually on DS4HRobotic*



**Philippe Noël**

- DevOps,
- Bioinformatics

**LOLA**

*Work actually on LOLA*



Loria



Inria





# Contacts

A technical question ? A project management issue ?

A design choice ? A library choice ?

Improve your code ? Increase your level ?

Come to us !

*...code review, teaching, sprints, pair programming, tutos, coffee...*

 [sed-nge@inria.fr](mailto:sed-nge@inria.fr)

 [sisr@loria.fr](mailto:sisr@loria.fr)

 <https://mattermost.inria.fr/sed-nge/>



**C20x : *On your left just before cafeteria***



[Bertrand.Wallrich@inria.fr](mailto:Bertrand.Wallrich@inria.fr)



[Adrien.Guenard@loria.fr](mailto:Adrien.Guenard@loria.fr)

# Thank you !